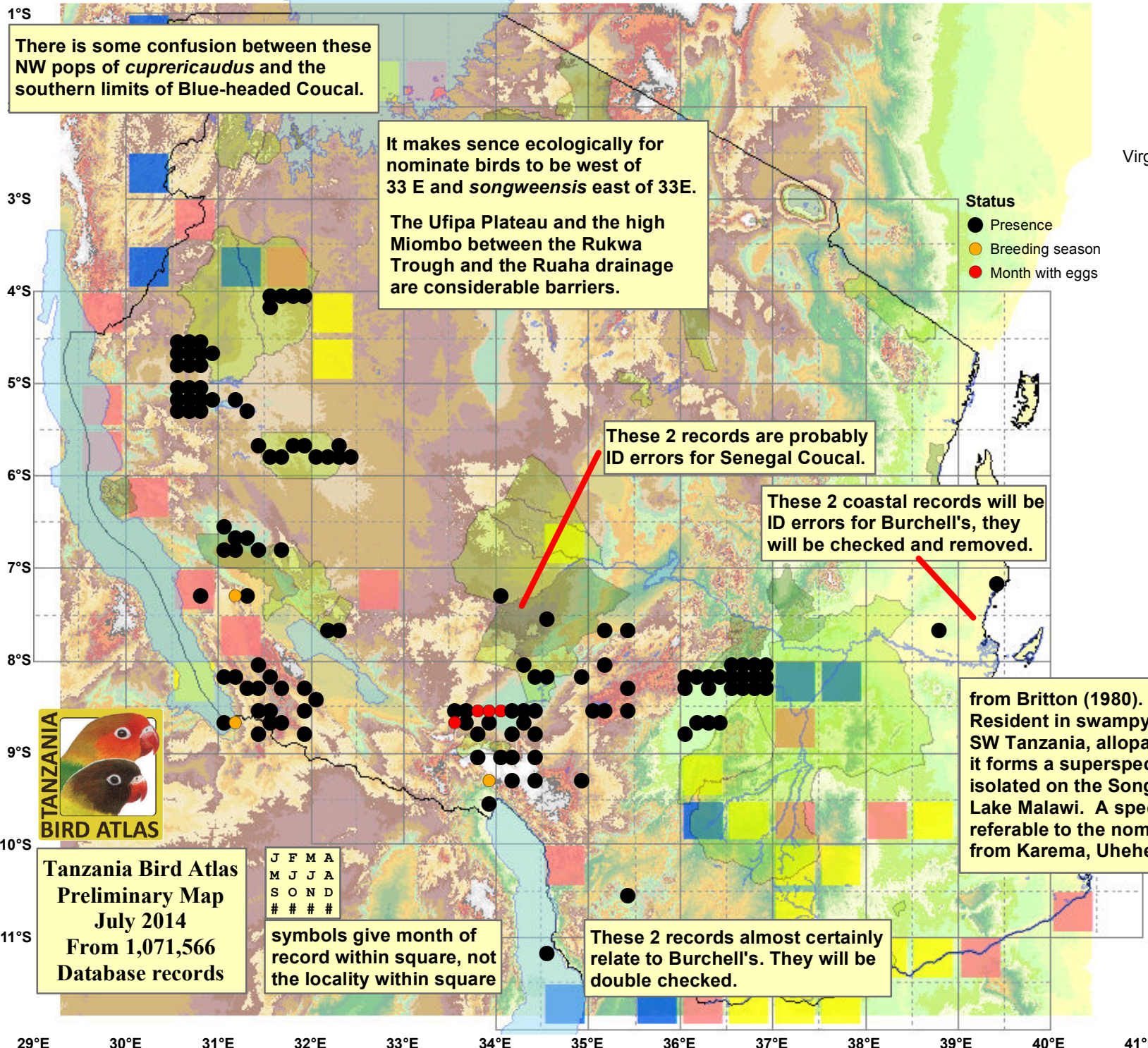


Coppery-tailed Coucal

Centropus cupreicaudus

130 plots from 213 records



There is some confusion between these NW pops of *cupreicaudus* and the southern limits of Blue-headed Coucal.

It makes sense ecologically for nominate birds to be west of 33 E and *songweensis* east of 33E.

The Ufipa Plateau and the high Miombo between the Rukwa Trough and the Ruaha drainage are considerable barriers.

These 2 records are probably ID errors for Senegal Coucal.

These 2 coastal records will be ID errors for Burchell's, they will be checked and removed.

from Britton (1980). Resident in swampy areas with reeds and papyrus in SW Tanzania, allopatric with *C. monachus* with which it forms a superspecies. The race *songweensis* is isolated on the Songwe River at the north end of Lake Malawi. A specimen from the Rukwa Valley is referable to the nominate race, as probably are records from Karema, Uhehe, Lake Sundu and the Usangu Flats.

J F M A
M J J A
S O N D
#

symbols give month of record within square, not the locality within square

These 2 records almost certainly relate to Burchell's. They will be double checked.

Virgin Yellow-vented Bulbul squares **9**

Single YvB month **16**

Two YvB months **24**

	Seasonality		
	presence	bs	eggs
January	19	-	1
February	13	-	-
March	10	-	1
April	15	-	1
May	17	-	1
June	15	1	-
July	20	-	-
August	20	-	-
September	21	-	-
October	20	1	-
November	16	-	-
December	19	1	-
month 13	1		



Tanzania Bird Atlas
Preliminary Map
July 2014
From 1,071,566
Database records