

Miombo Grey Tit

Parus griseiventris

59 plots from 81 records

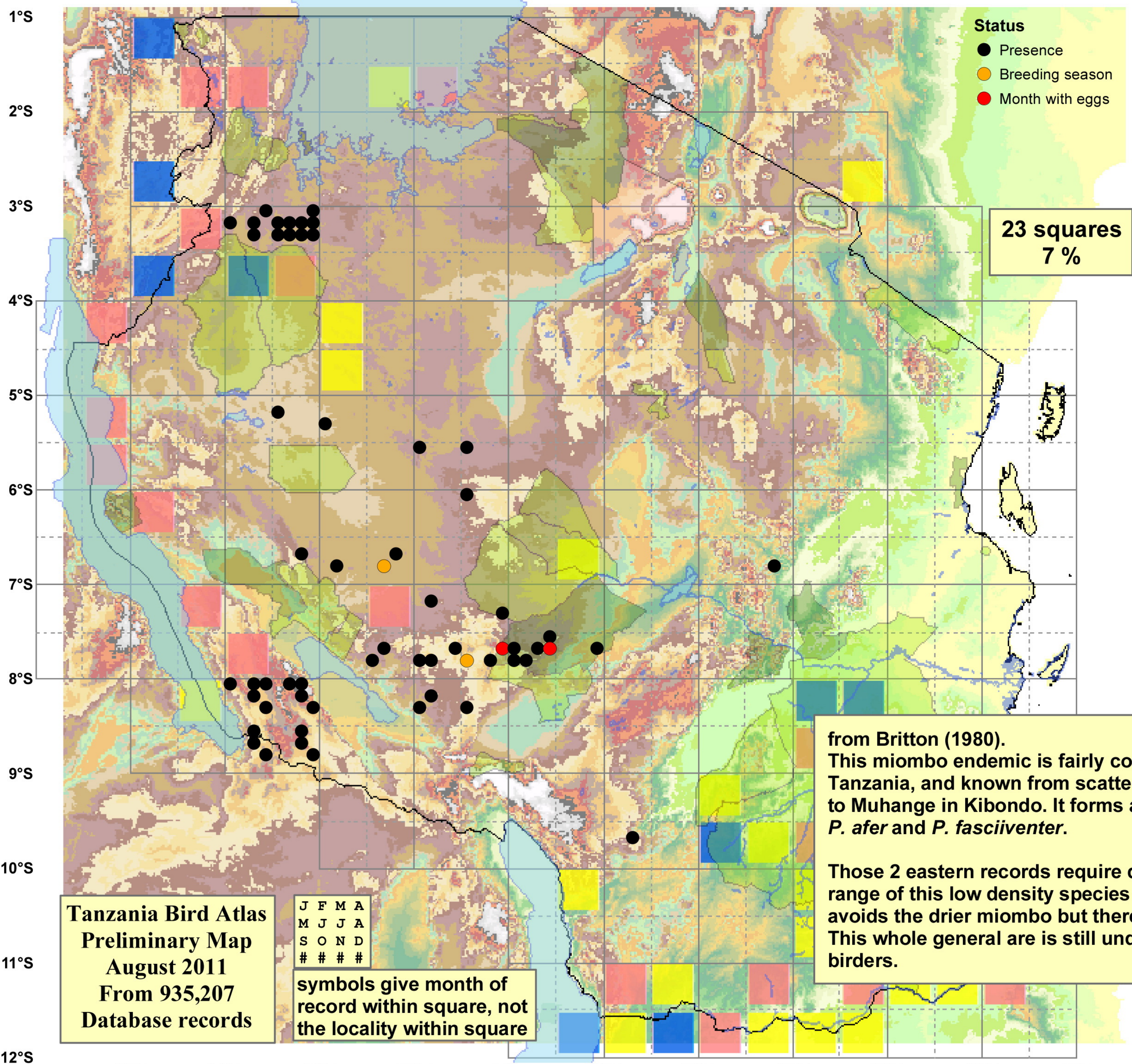
Status
 ● Presence
 ● Breeding season
 ● Month with eggs

Virgin Yellow-vented Bulbul squares **9**
 Single YvB month **20**
 Two YvB months **21**

23 squares
7 %

Seasonality
 presence bs eggs

Month	presence	bs	eggs
January	5	-	-
February	1	-	-
March	11	-	-
April	7	-	-
May	6	-	-
June	4	-	-
July	11	-	-
August	8	-	2
September	8	1	-
October	5	1	-
November	4	-	-
December	7	-	-



Tanzania Bird Atlas
Preliminary Map
 August 2011
 From 935,207
 Database records

J	F	M	A
M	J	J	A
S	O	N	D
#	#	#	#

symbols give month of record within square, not the locality within square

from Britton (1980).
 This miombo endemic is fairly common around Mt Rungwe in SW Tanzania, and known from scattered localities west of 34°E north to Muhange in Kibondo. It forms a superspecies with the allopatric *P. afer* and *P. fasciiventer*.
 Those 2 eastern records require double checking, otherwise the range of this low density species is quite well shown here. It clearly avoids the drier miombo but there should be more records out west. This whole general area is still under watched, esp by experienced birders.