

# Violet-tipped Courser

*Rhinoptilus chalcopterus*

211 plots from 318 records

Virgin Yellow-vented Bulbul squares **13**

Single YvB month **25**

Two YvB months **28**

A known intra-African migrant but movements poorly understood. This significant increase in records during May is indicative of considerable movement as is the paucity of records for August - November.

However, we are a long way from understanding and explaining such movements. Any ideas much appreciated.

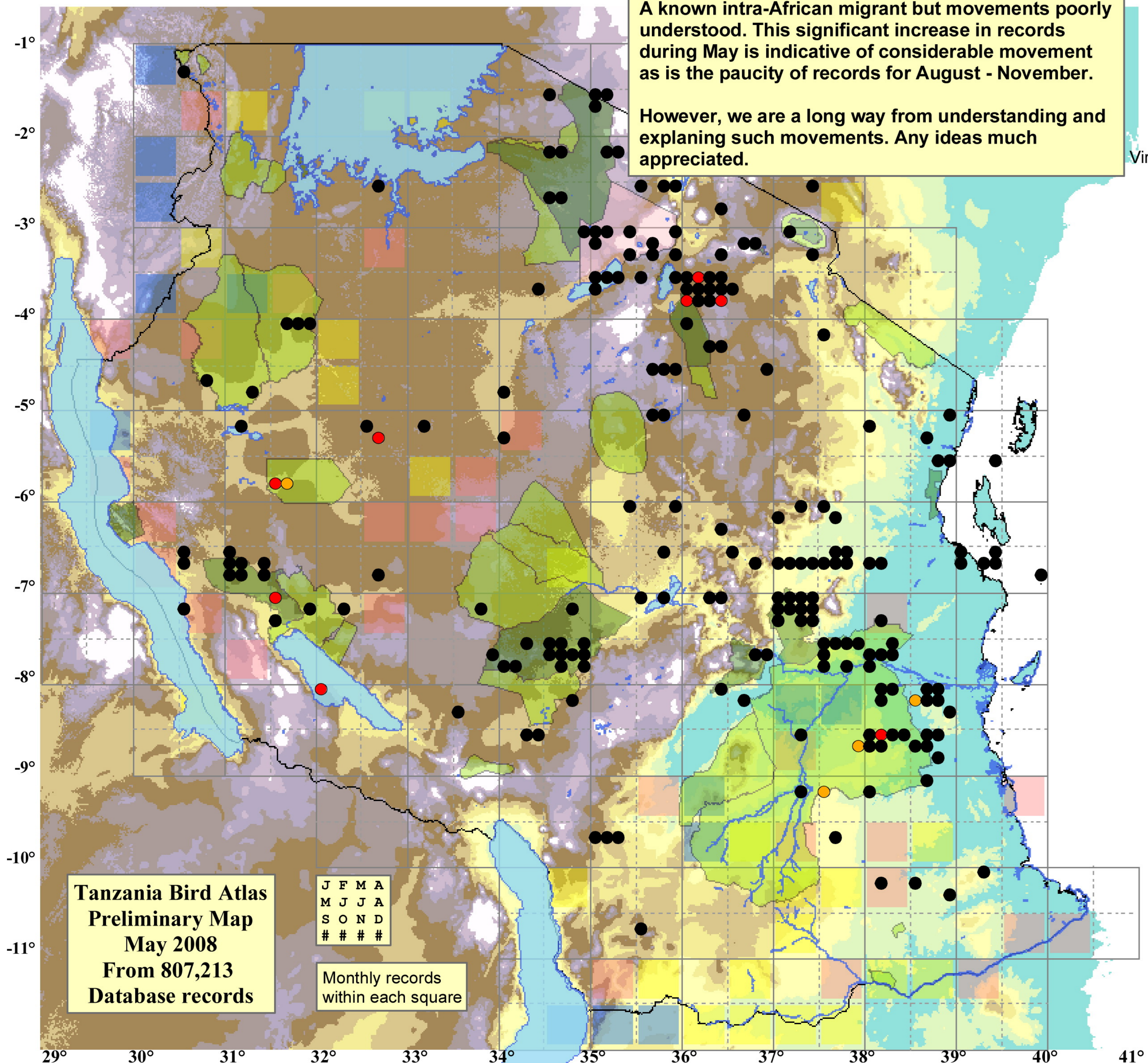
	Seasonality		
	presence	bs	eggs
January	37	1	2
February	26	-	2
March	28	-	-
April	29	-	-
May	52	2	-
June	39	-	-
July	29	-	-
August	11	1	-
September	10	-	4
October	8	1	1
November	8	-	-
December	23	1	3

- Status**
- Presence
  - Breeding season
  - Month with eggs

**Elevation (m)**

**VALUE**

1 - 300
300 - 500
500 - 700
700 - 900
900 - 1,100
1,100 - 1,300
1,300 - 1,500
1,500 - 1,700
1,700 - 1,900
>1,900



Tanzania Bird Atlas  
Preliminary Map  
May 2008  
From 807,213  
Database records

J	F	M	A
M	J	J	A
S	O	N	D
#	#	#	#

Monthly records within each square